

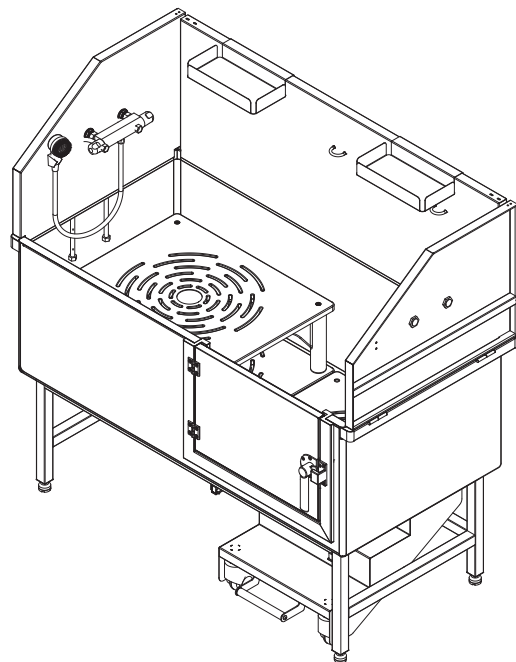


Built to impress and ready to work – equipment by and for pet groomers

WZ-230N / WZ-230NL

User Manual

Waggz XL Roll-Lock
XL Solid Tub with Roll-Out Stairs
WZ-230NL



The image shown here is indicative only. If there is inconsistency between the image and the actual product, the actual product shall govern.

1.TECHNICAL SPECS

WZ-230N			
Basin Size	50 x 28.75 in 、 127 x 73 cm	Door Style	Pull out
Height (Floor to Bottom of Basin)	37.5 in 、 95.2 cm	Door Width	20 inches 、 50.8 cm
Rolling Mechanism	Hair-proof casters and medical-grade foot brake	Frame Material	Polished stainless steel
Max Weight Capacity	265 lb 、 120 kg	Product Net Weight	176 lb 、 80 kg (3-person lift)

WZ-230NL			
Basin Size	60 x 28.75 in 、 152.4 x 73 cm	Door Style	Pull out
Height (Floor to Bottom of Basin)	37.5 in 、 95.2 cm	Door Width	20 inches 、 50.8 cm
Rolling Mechanism	Hair-proof casters and medical-grade foot brake	Frame Material	Polished stainless steel
Max Weight Capacity	265 lb 、 120 kg	Product Net Weight	220 lb 、 100 kg (4-person lift)

2.CONTACT INFORMATION

Thank you for your purchase! This quick-start guide will help you get the most out of your new Waggz grooming tub. If you have any questions, need replacement parts, or want to purchase additional products, just get in touch!

Visit 910 Canal Pl, City of Industry, CA 91746
Call 626-549-1212
Email info@waggz.com
Follow @waggzgrooming

3.GENERAL GUIDANCE

UPON ARRIVAL

Please carefully examine your grooming tub and review the packing list. If you notice any missing parts or damaged components, notify Waggz immediately.
Do not attempt to disassemble the table before contacting Waggz.

CLEANING, CARE, AND MAINTENANCE

Waggz grooming tubs are built to impress and ready to work. Regular cleaning and routine maintenance will keep it that way! Follow these steps to extend the life of your tub and protect your Waggz 2-year warranty:

WORKING CONDITIONS

Temperature: avoid extreme cold (<40°F) and extreme heat (>104°F)
Humidity: avoid extreme dryness (<20%) and extreme humidity (>90%)

DAILY CLEANING

Remove hair and dander from the tub, then wipe clean with a mild detergent. Please avoid using anti-grease detergents and citrus-based cleansers, which may damage the finish on your tub. Stains should be promptly treated with 1 part ethyl alcohol to 20 parts water, then rinse well. Dry all surfaces between uses.

QUARTERLY INSPECTION

- Complete a visual inspection of all equipment and accessories
- Check the tightness and state of wear on all screws, bolts, bushings, and pins
- Check that wheels are attached securely and roll smoothly with clean treads
- Check the stability and installation of all adjustable components
- Check that the foot lock correctly activates the brake and works efficiently

NON-ROUTINE MAINTENANCE

- For safety reasons and to avoid invalidating the warranty, Waggz alone must diagnose and organize action for any faults relating to the roll-out stair casters and brake.
- Maintenance technicians must be familiar with the contents of this instruction booklet and may only use original Waggz parts and components.
- Always complete a full safety inspection of the tub after rough handling, falls, drops, or bumps.

⚠ WARNING

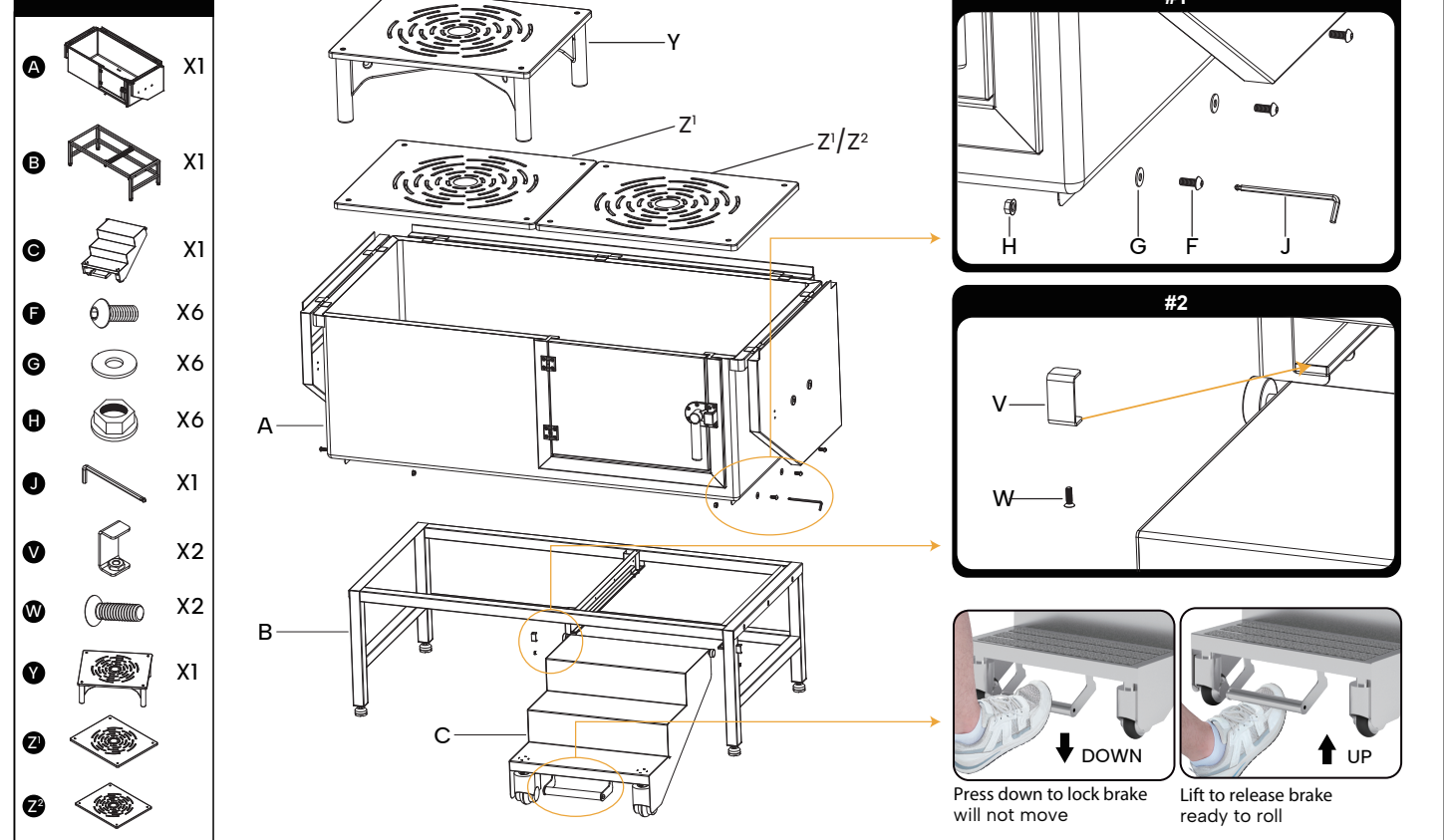
- IF YOU EVER HAVE SAFETY CONCERNS ABOUT THE CONDITION OF COMPONENTS, IMMEDIATELY DISABLE THE EQUIPMENT TO PREVENT USE UNTIL SAFETY RISKS HAVE BEEN REMOVED OR RESOLVED.
- IMMEDIATELY RECORD AND REPORT ANY DEFECTS OR DAMAGES DIRECTLY TO THE MANUFACTURER.

3. PACKING LIST

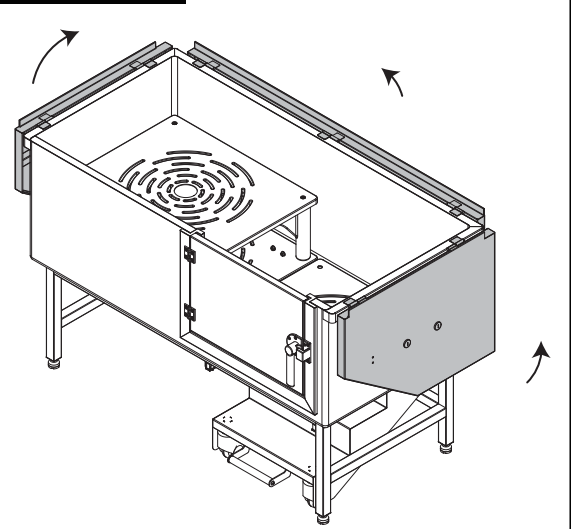
A X1	B X1	C X1	D X2	E X1	F X6
G X6	H X18	I X1	J X1	K X3	L X1
M X1	N X1	P X1	Q X2	R X2	S X2
U X2	V X2	W X2	X X1	Y X1	Z¹ X2
					Z² X1

4.ASSEMBLY INSTRUCTIONS

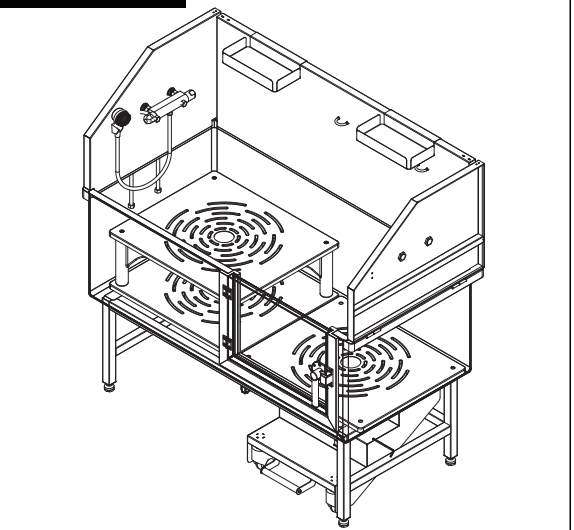
STEP 1



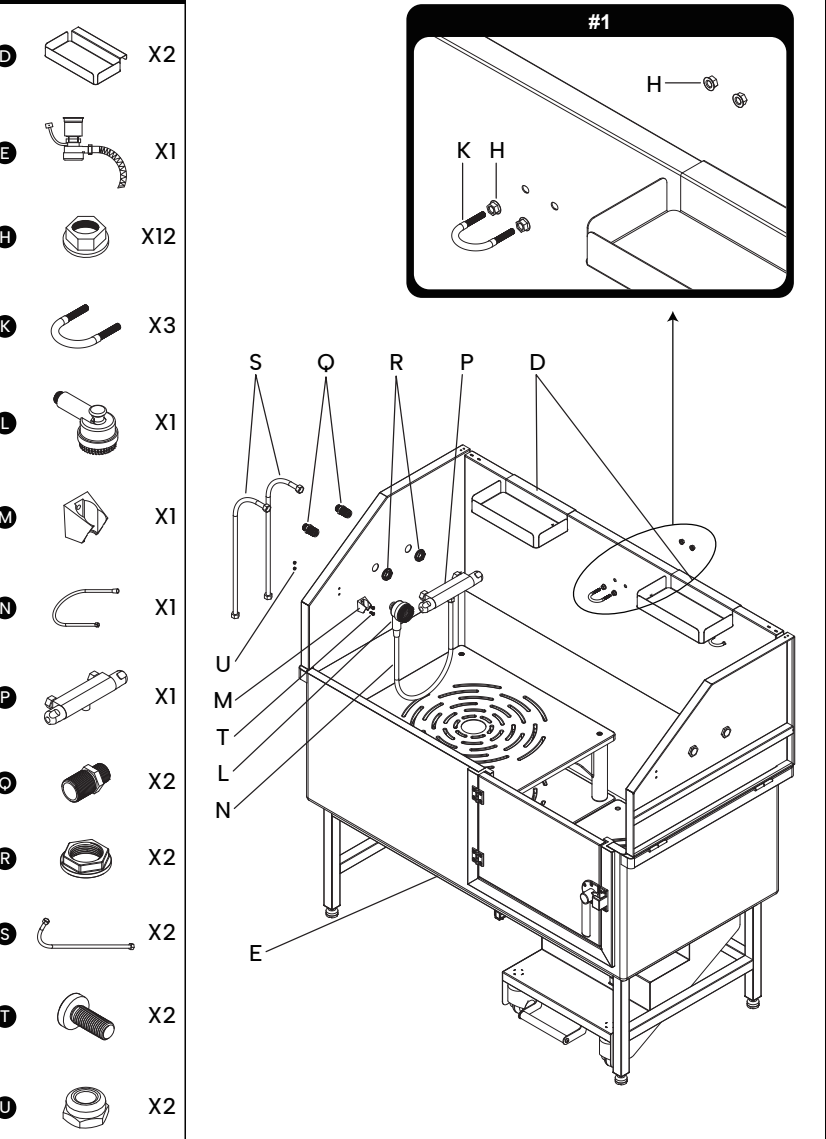
STEP 2



STEP 4



STEP 3



Safety Tips:

- 1. Check space between the splash guards and ceiling before installation and assembly
- 2. Adjust and stabilize feet for even balance before loading animals into the tub

5.TABLE DIMENSIONS

